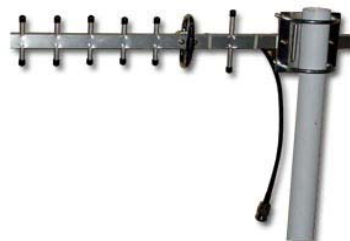


**Y A Series Directional Yagi Antenna**

This product is specially designed for directional communication in long distance. It is easy to install with its simple structure. The passivated aluminum and high reliability give it long working life-span.



Part No.	YA2400-7-9N
Frequency range	2400~2500MHz
Bandwidth	100MHz
Gain	9dBi
VSWR	≤1.5:1
Polarization	Horizontal or Vertical
Horizontal Beamwidth	57°
Vertical Beamwidth	49°
Front to Back Ratio	≥11dB
Impedance	50Ω
Max Input Power	50W
Size	400X67X40mm
Connector	N
Rated Wind Velocity	210km/h
Lightning Protection	DC Ground

\* Please specify frequency band when ordering

Eyecom company policy is one of continuing improvement, therefore we reserve the right to change this specification without notice.